

## **Bergen County**

### **Teterboro Airport**

Lanny Rider, Airport Manager-Patrick Bonner, Airport Operations Manager. Note: Lanny Rider is now retired. The new manager of Teterboro is Richard Heslin.

### **General**

Teterboro, operated by the Port Authority of New York and New Jersey, is one of New Jersey's oldest facilities, established in 1915-1917. It is now the reliever airport for corporate jets which would otherwise utilize already overburdened JFK International, LaGuardia, and Newark-Liberty (EWR) Airports. There is very little small aircraft activity here, with tie-down fees in excess of \$500 per month. Two flight schools have moved since, by their nature, they place a heavy demand on airspace. Daily operations at Teterboro average 600 take offs and landings, 60 percent of which are transients.

Teterboro occupies 830 acres, making it the largest airport in the state behind EWR, which occupies over 2000 acres. It has two runways: 1/19 which is asphalt paved and 7000 feet long x 150 feet wide, and runway 6/24 which is asphalt paved and 6013 feet long x 150 feet wide.

An Engineered Material Arresting System (EMAS) was installed in the fall of 2006. This 265-foot-long arrestor bed, installed at a cost of \$8.5 million, is designed to stop an aircraft from reaching Route 46, immediately adjacent to airport property. The system is designed for the type and weight of aircraft prevalent at Teterboro and, similar to an auto exiting a highway into heavy snow, will crush under the weight of these aircraft, thus stopping them in a very short distance. The airport is restricted to aircraft weighing 100,000 pounds or less. The Port Authority has resisted raising this weight limit in view of community opposition to more traffic and larger aircraft.

## **Future**

Management believes that Teterboro will remain a viable facility for many years to come. Its strategic plan is to continue as a reliever for corporate aircraft to the three air carrier airports in the region. They are positive about the future of Micro-jets and see significant growth in fractional ownership. More than 60 percent of Teterboro's business is transient aircraft.

## **Access and Wayfinding Issues**

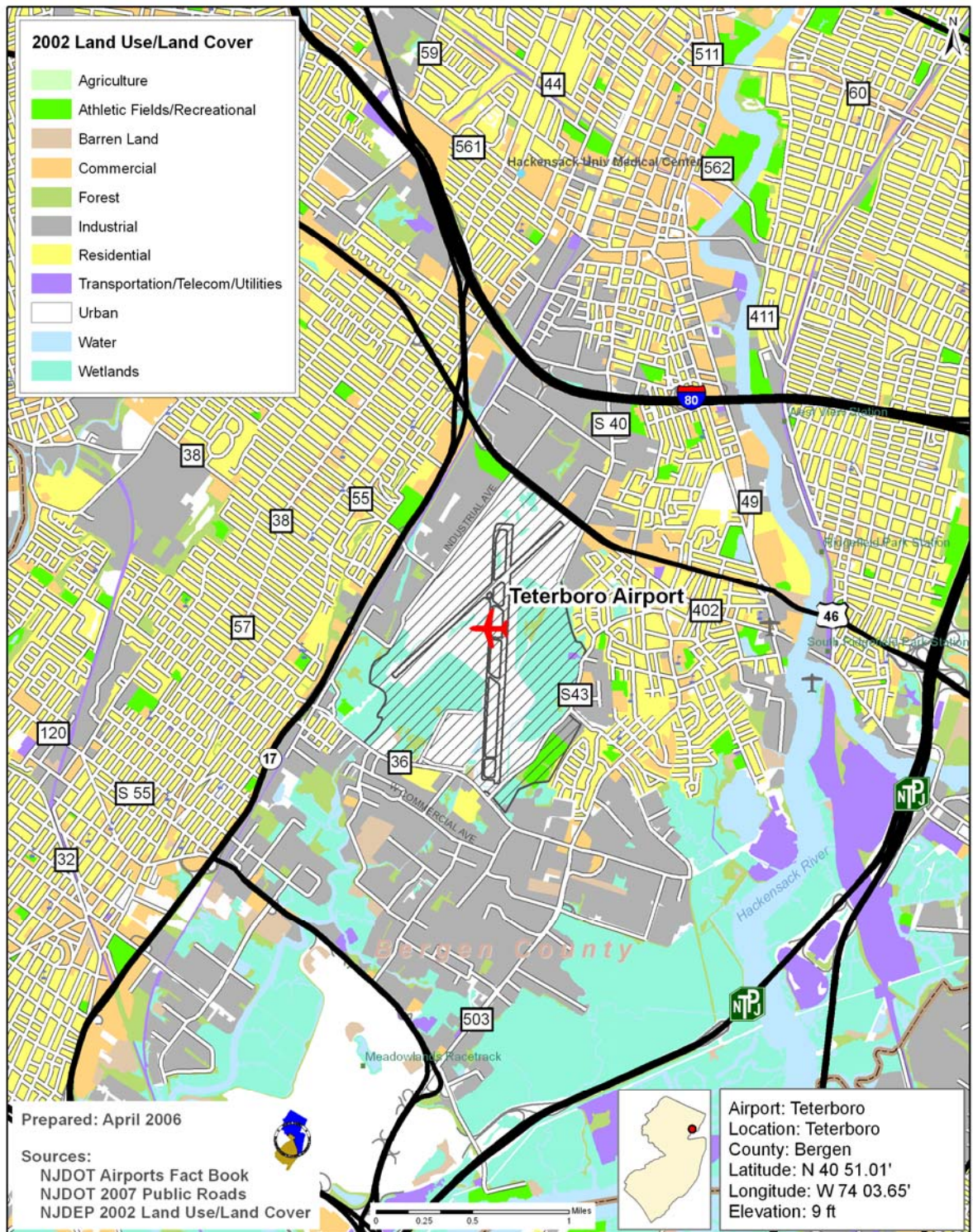
Major access to Teterboro is provided by Routes 46 and I-80 to the north, Route 17 on the westerly side, and local access via Moonachie Road. Some traffic constraints are experienced at Moonachie Road and Route 17, Route 46 in and out of I-80, and access to Route 17 from Route 46 at peak hours. Traffic along Moonachie Road is also constrained by excessive truck traffic destined to the Carlstadt-Moonachie industrial areas.

Airport directional signage is needed on Routes 17, 46, and I-80 in the general vicinity of the airport and approaches thereto.



**Teterboro Airport (TEB)**  
Teterboro, NJ

# NJTPA Core Airports



# NJTPA Core Airports

## Two way - 24 Hour Traffic Volume for Surrounding Roads

