

## **Sussex County**

### **Sussex Airport - Sussex**

Paul Styger, Owner/Manager

#### **General**

This airport is the only core airport in Sussex County and lies directly off CR 639 at an elevation of 400 feet. It was relocated to its present location in 1944 and has operated continuously since that time. It supports two flight schools, a parachute school and maintenance, welding and avionics (radio) shops. New runway lighting has been installed that increases in intensity with pilot activation. Jet A and aviation fuel are available. Operations average 100 per day or roughly 36,000 per year. The airport occupies about 100 acres with 140 based aircraft in tie down spaces and hangars. There are five multi-plane hangars on the airport with 50 T-hangars adjacent to the airport on newly acquired land that is connected to the runway and other services by a taxi-way. There are five corporate clients. The single runway, runway 3/21, is asphalt paved and measures 3,510 feet long x 75 feet wide.

#### **Future**

The airport has a waiting list for hangar space. The owner wants to grow the business and believes he can do so as this is the only core airport in the county.

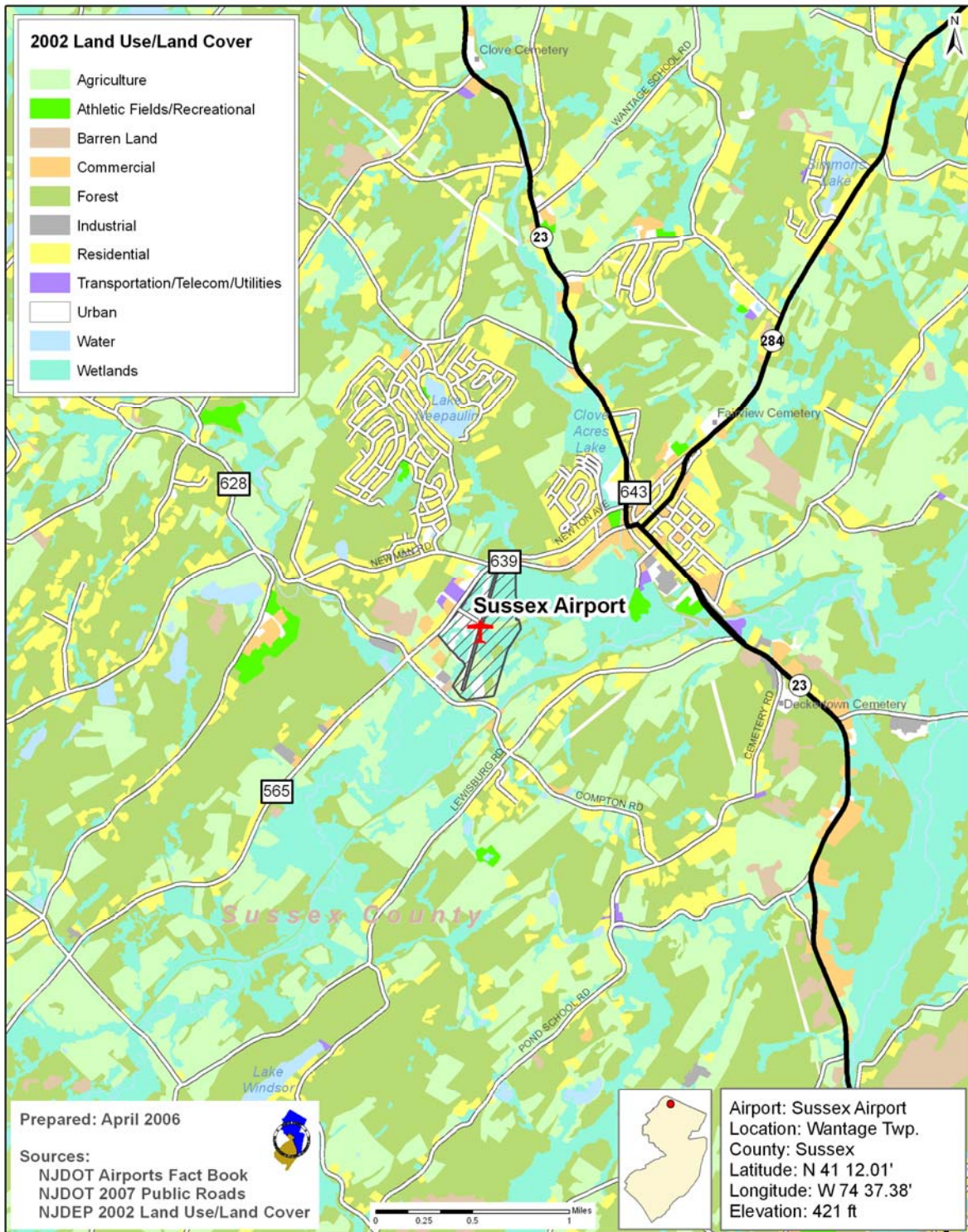
#### **Access and Wayfinding Issues**

Signage is needed south of the airport at the intersection of Route 15 from the east, Route 206 from the west and CR 565 at the intersections of CR 637, 628, and 639. North of Sussex Borough, signage coming south on Route 284 is recommended.



**Sussex Airport (FWN)**  
Sussex, NJ

# NJTPA Core Airports



# NJTPA Core Airports

Two way - 24 Hour Traffic Volume for Surrounding Roads

