

# **Somerset County**

## **Somerset Airport**

Chris Walker, Manager

### **General**

The public use airport is owned and operated by the Walker family and located in Bedminster. It was originally named Walker Field after the founder, George Walker, who established the airport in 1946. The property consists of 200 acres, only 52 of which are devoted to airport purposes, and includes one asphalt paved runway, 12/30, that is 2,750 feet long x 65 feet wide, and two turf runways, 8/26 and 17/35, which are 2,200 feet and 2000 feet in length, respectively. There are 205 based aircraft, including turboprop and jet aircraft, generating an estimated 112 operations per day. There are 90 individual hangar spaces located on the property. Jet A and aviation fuel are available. Runway lighting is pilot controlled. The airport supports both private and business aviation, glider clubs, a flight school, charter facilities and aircraft maintenance. There are seventeen employees on the grounds. The airport would be able to accommodate the new VLJ in the future.

There has been considerable litigation at this airport over noise. In the early days there were few houses in the vicinity of the airport, but that number has greatly increased over the years. One suit surrounds the usage of the airport by helicopters. At one point it appeared this suit would be resolved, but that decision is being appealed. Management maintains that, for the most part, helicopters are for the State Police and Medivac. This and other litigation has proven very expensive for the airport.

### **Future**

The airport wants to expand business income by providing more hangar facilities. Hangars are a good source of revenue and can be constructed within existing airport boundaries.

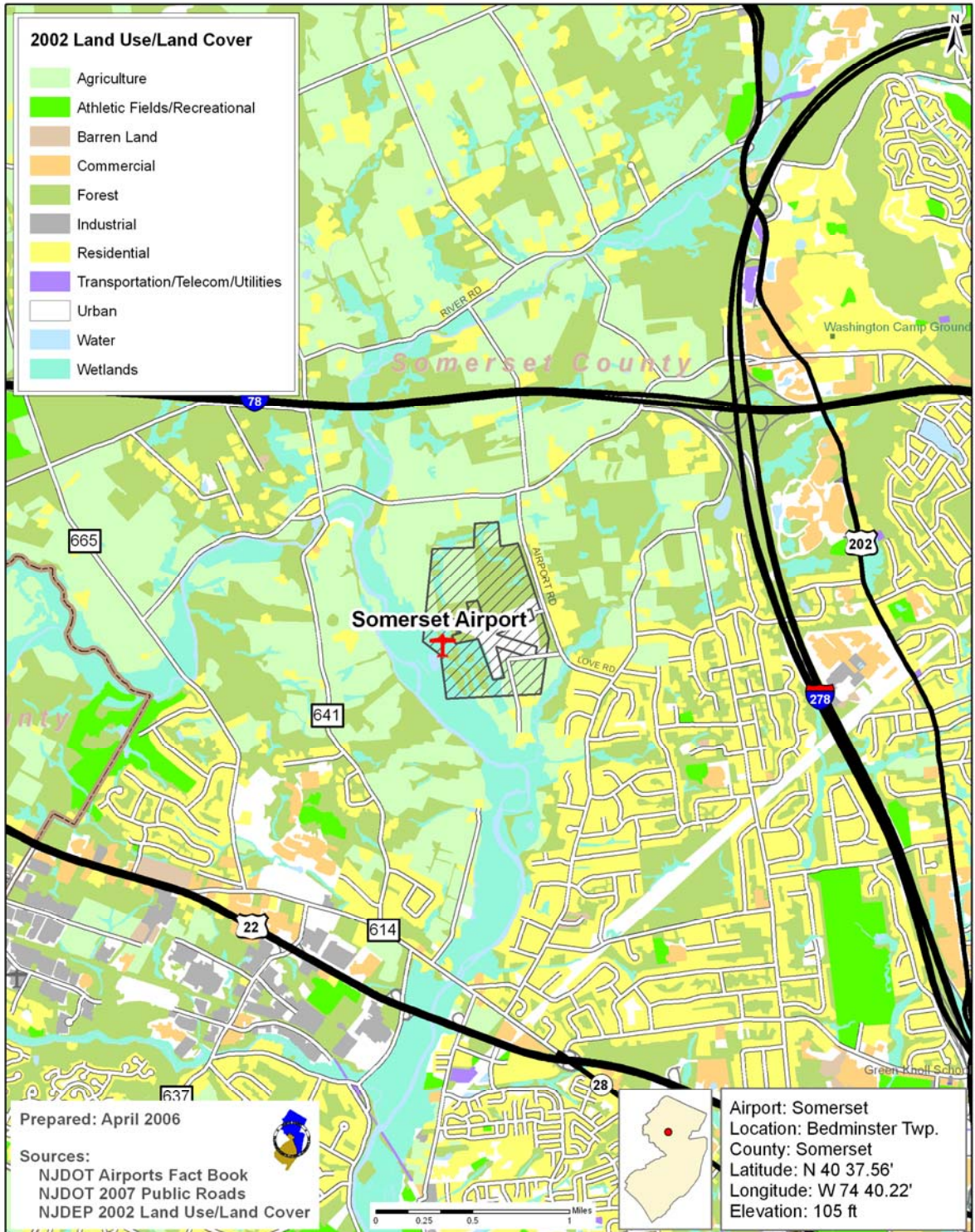
## **Access and Wayfinding Issues**

The nearby roads are rural in nature. The airport management would like to have more signage leading to the airport but cited instances in the past where signs have been removed, destroyed, or defaced. If this hurdle can be overcome, signage is requested at the intersections of Route 28 and Meadow Road, Meadow and Love Roads and Love Road and Airport Road. From the south, signage is needed at CR 641 and CR 620, CR 620 and Airport Road and the intersection of CR 665 and CR 620.



**Somerset Airport (SMQ)**  
Somerville, NJ

# NJTPA Core Airports



# NJTPA Core Airports

## Two way - 24 Hour Traffic Volume for Surrounding Roads

