

Solberg-Hunterdon Airport - Readington Township

Thor Solberg, Part Owner and Family Member

General

Solberg-Hunterdon Airport occupies some 750 acres, and is served by 3 runways: runway 4/22 is 3,735 feet long by 120 feet wide and is asphalt paved and turf (3,000 feet x 50 feet paved, 735 feet x 120 feet turf); runway 13/31 is 3,440 feet by 200 feet - turf; and runway 10/28 is 2,450 feet by 150 feet- turf. Solberg is home to some 78 based aircraft and averages 102 operations per day. Runway 4-22 is lit from dusk to dawn with medium intensity runway lighting. Aviation fuel and Jet A fuel are available. The airport has a large hangar which holds 24 aircraft.

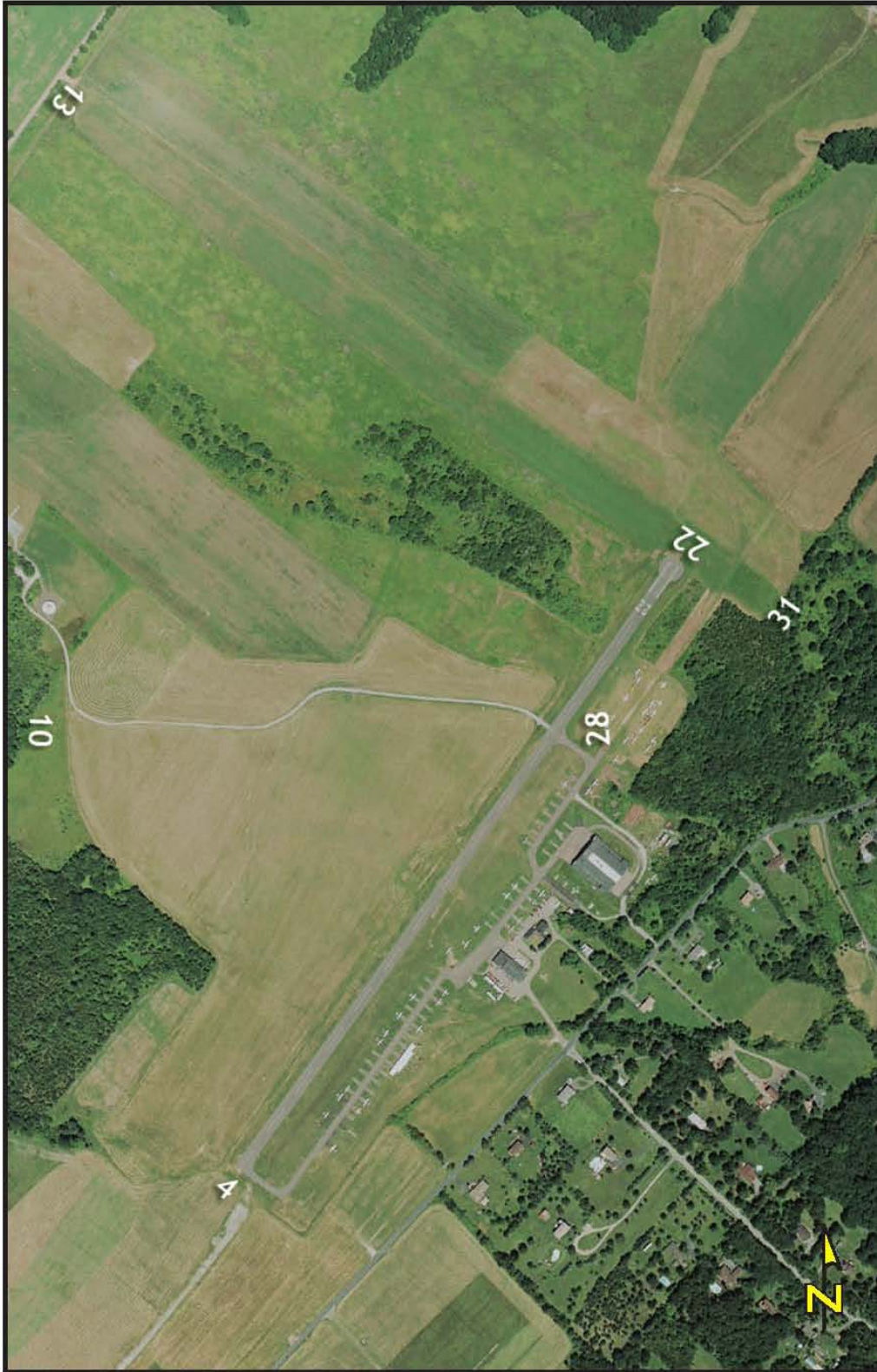
Future

The Township of Readington has approved a \$22 million bond issue to purchase 625 acres of Solberg family-owned property which surrounds the airport and the airport's development rights. A recent State Superior Court ruling held that the township has the right to condemn the property. Readington Township has stated that they would allow safety upgrades and limited expansion at the airport.

Access and Wayfinding Issues

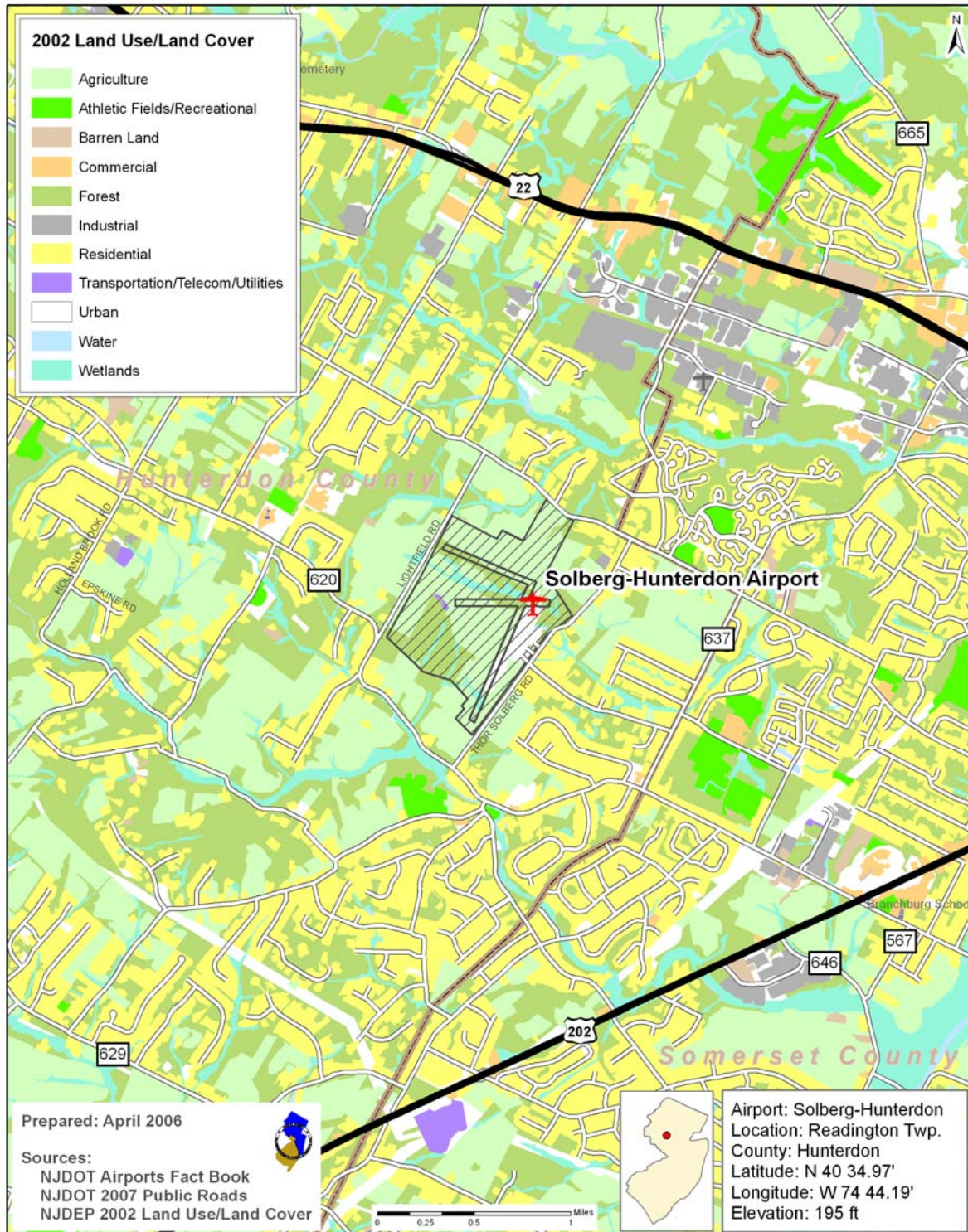
The airport can be accessed from I-78, I-287 and Routes 22 and 202. All of these access routes should be examined for signage, as clear roadway directions to this air port are lacking. Care in placing signage must be taken to differentiate between Solberg-Hunterdon and the nearby Somerset Airport in Somerset County as the two share common exits from the interstates.

Signage on airport approaches are desired along I-78, Route 202, and closer in on Routes 22, CR 620, CR523 (Main Street), CR 523 and Readington Road, and at CR523 and Pulaski Road.



Solberg-Hunterdon Airport (N51)
Readington, NJ

NJTPA Core Airports



NJTPA Core Airports

Two way - 24 Hour Traffic Volume for Surrounding Roads

