

Union County

Linden Municipal Airport - Linden

Paul Dudley, Airport Manager.

General

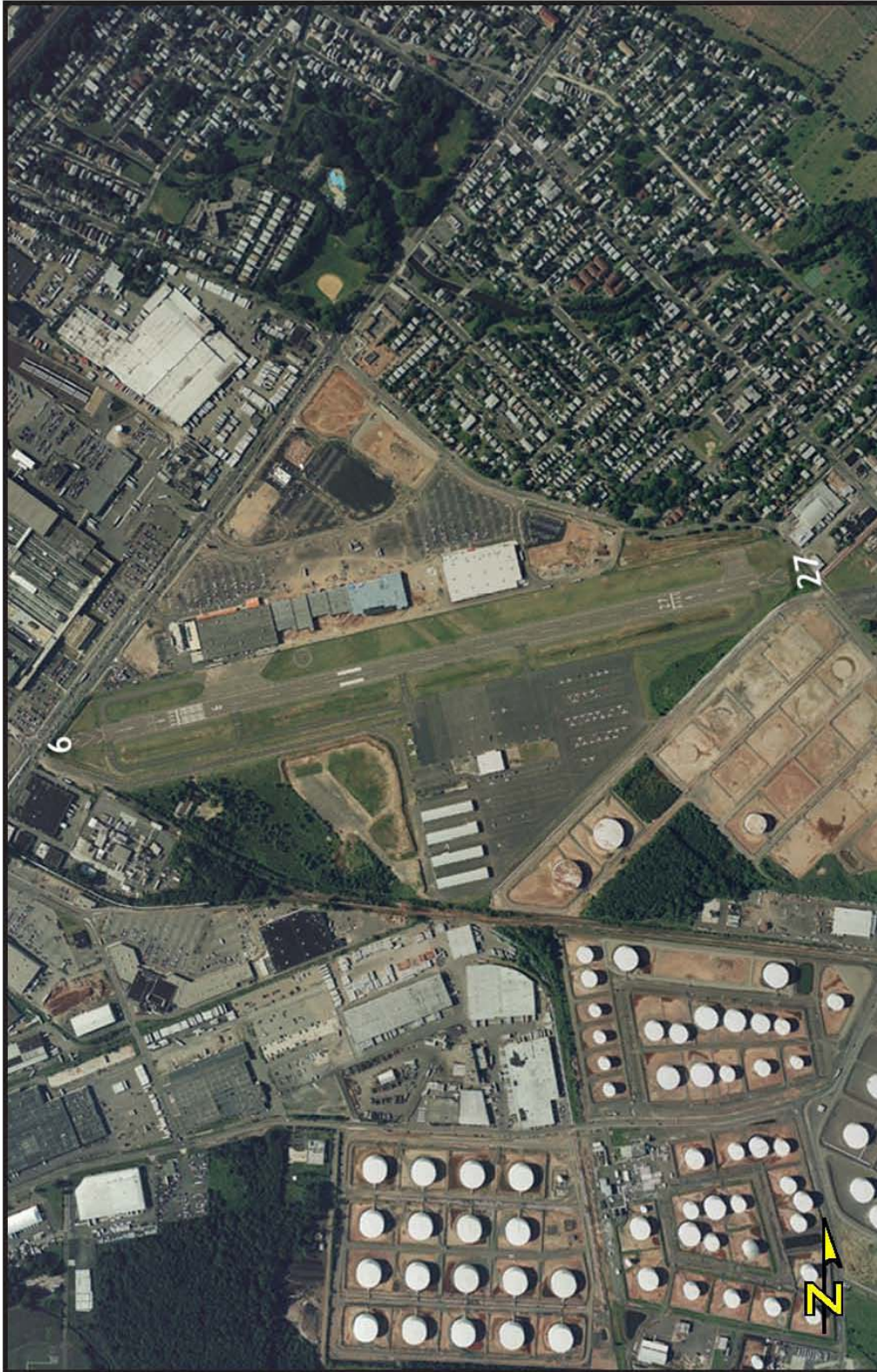
Linden Airport is located 10 miles south of Newark. The airport was constructed during World War II as a field for testing and ferrying fighter aircraft built at the former GM plant across Route 1&9. The airport was turned over to the city of Linden in 1947, and it commenced civil operations two years later. In 2003, a large portion of the airport property was developed as a shopping center called Aviation Plaza. The airport, now on 90 acres, retains its main building, hangars, and a single asphalt paved runway, runway 9/27, which measures 4,137 feet long x 100 feet wide. There are 130 based aircraft of which 20 to 25 are helicopters. Television network stations 2, 4, 7, 11 as well as Bloomberg and News 88 keep their news and traffic reporting helicopters here. Of the 50,000 operations per year, 60 percent are by helicopters. Transient aircraft comprise 8 to 10 percent of the traffic. There are 49 hangar spaces and two flight schools on the premises. The airport is home to three flying clubs. Both aviation fuel and Jet A are available.

Future

The airport would like to see revenue increase in the future through a controlled increase in aircraft traffic and more hangar construction.

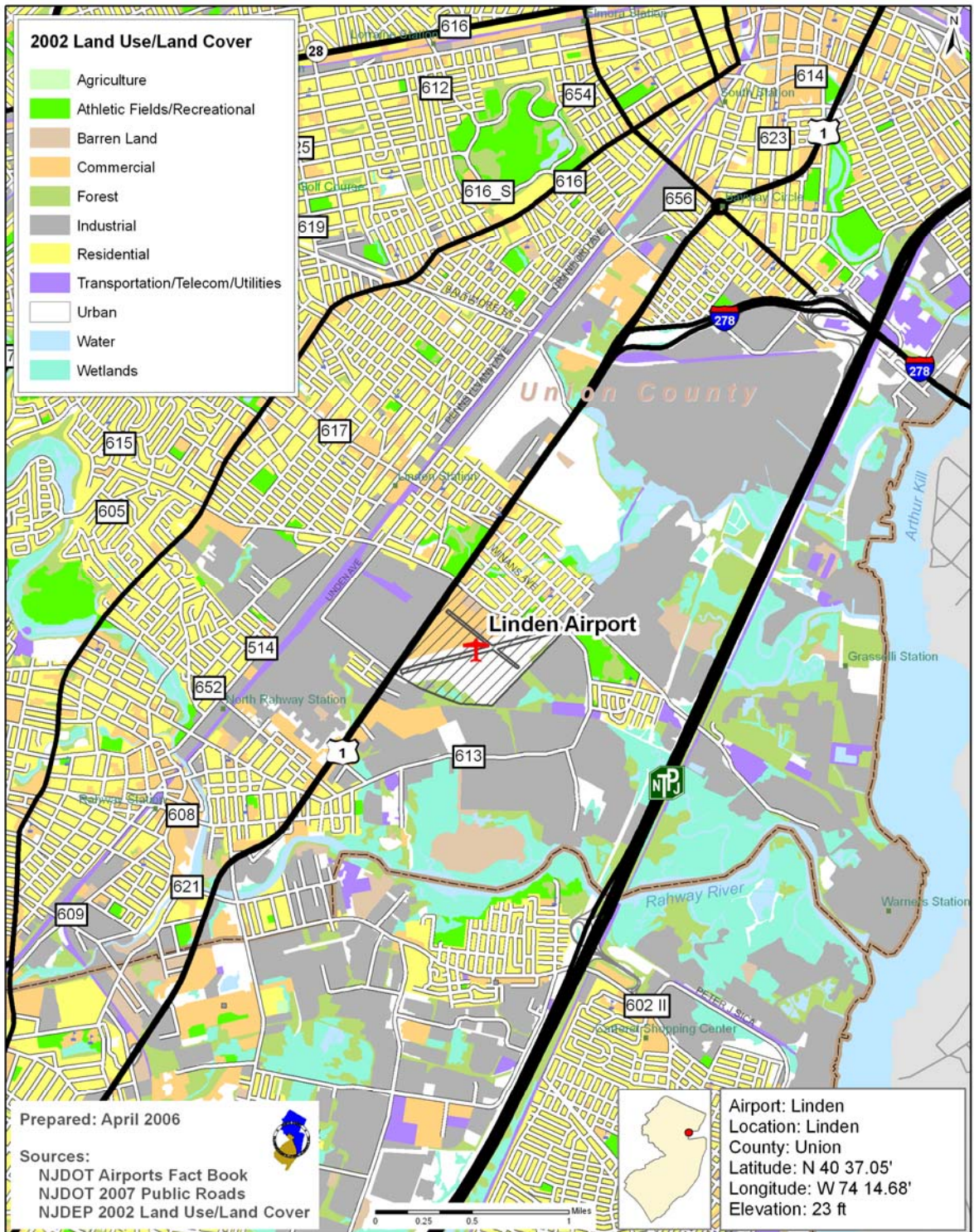
Access and wayfinding Issues

Linden Airport lies directly off Routes 1&9, in the City of Linden, in a very congested area. Currently there is no visible signage from the north or south of the airport on Routes 1 & 9. Signage is suggested at the intersection of Route 27 and CR 615, and along CR 615 in an easterly direction. Signage is also desirable on CR 621 in both Union and Middlesex Counties.



Linden Airport (LDJ)
Linden, NJ

NJTPA Core Airports



NJTPA Core Airports

Two way - 24 Hour Traffic Volume for Surrounding Roads

