

Essex County

Essex County Airport

James Paganelli, Executive Director, Essex County Improvement Authority.

General

Essex County Airport is located 20 miles west of New York City and 11 miles northwest of Newark. It is a designated reliever airport, relieving congestion at air carrier airports by providing an alternative to these airports for non-passenger flights. The airport is operated by Essex County and is a publicly-owned, publicly-funded, public-use facility. Ninety percent of airport operations involve small private aircraft. There are four flight schools on the airport grounds which contribute to the small aircraft volume. The airport currently experiences over 600 operations per day, the majority of which involve small piston-engine aircraft. The mix is expected to increase in favor of jet aircraft in the future.

Wetlands adjacent to portions of the airport make expansion problematic. The county is satisfied with the current status of the airport and is not looking for any immediate redevelopment, but would like the ability to expand tie-down and hangar services in the future to generate additional revenues.

Future

Airport personnel indicate that Essex County's runway lengths are more than sufficient to handle the advent of VLJ's.

Access and Wayfinding Issues

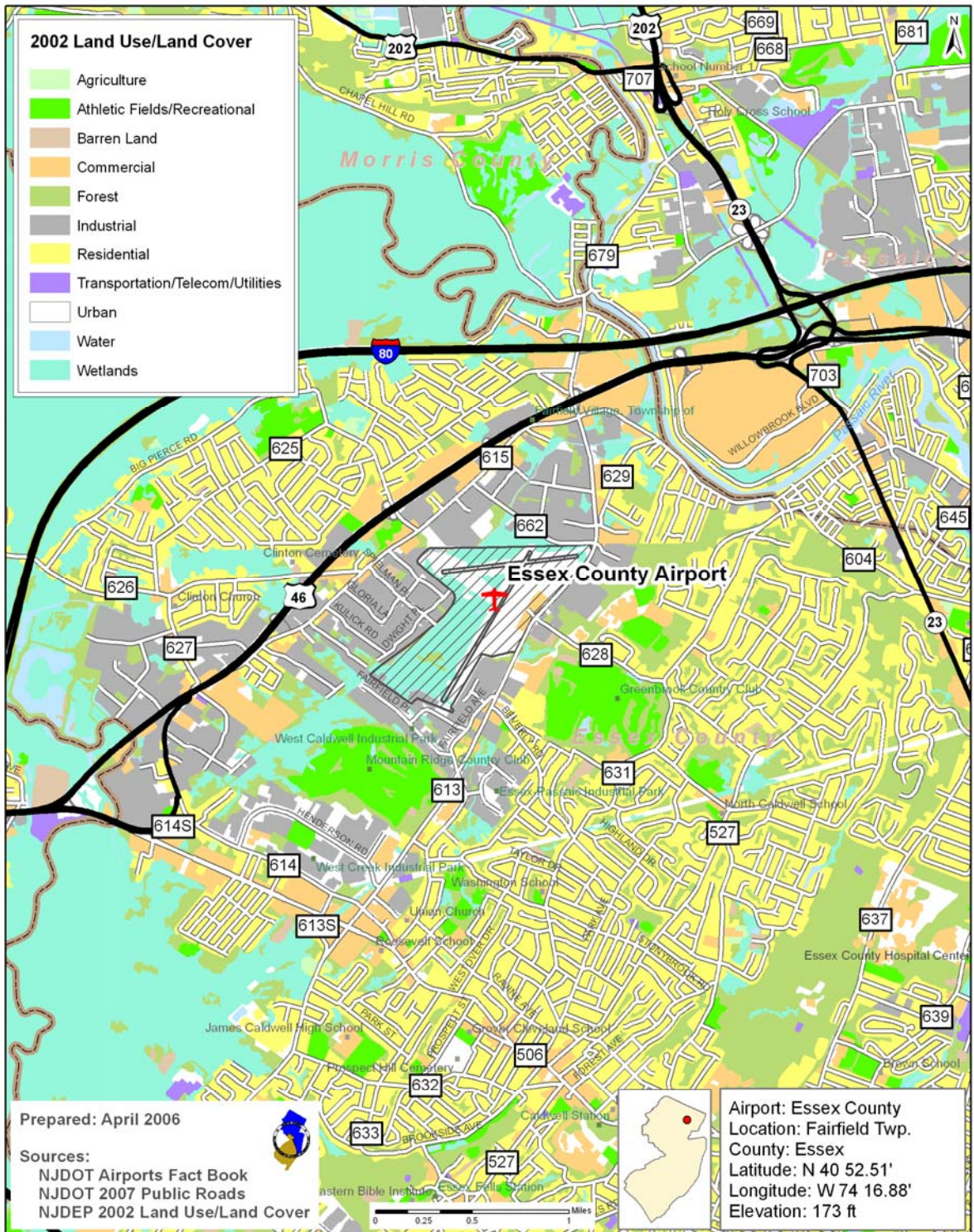
Passaic Avenue runs along the airport on the east side and works well as access to the airport. Further north, Passaic Avenue intersects Route 46 at Two Bridges Road, a recently upgraded interchange. Major access to the area is provided through I-80, Route 46, and Route 23. The major constraint to airport access is at the interchange of these

routes, also known as the “spaghetti bowl.” This constraint is most notable during the daily rush hour periods and is more of a hindrance to airport employees than airport users. Well-placed airport signage is required on I-80, and Route 46 and Route 23. The only signage observed was off route 46 located in a field and not easily noticed.



Essex County Airport (CDW)
Caldwell, NJ

NJTPA Core Airports



NJTPA Core Airports

Two way - 24 Hour Traffic Volume for Surrounding Roads

