

Warren County

Blairstown Airport

Dennis Kiernan – Airport Manager

General

The airport is located in the Blairstown Township approximately two miles southeast of the Village of Blairstown. It is a privately owned, public use facility. Blairstown Airport is the only core airport in Warren County. The airport occupies 150 acres and serves 110 based aircraft. Daily operations average 65. The single runway, runway 7/25, is 3,100 feet long x 75 feet wide and is asphalt paved. Of the 110 based aircraft, 80 are in hangars. In season, there are about 30 gliders which operate out of the airport. Approximately 60 percent of the operations involve local general aviation and the balance is transient.

Future:

The airport's management would like to expand business in the future with consideration being given to adding hangar space.

Access and Wayfinding Issues

Interstate access to the airport is afforded by Exits 8 and 12 off of I-80. Traffic on I-80 is problematic during peak periods as I-80 is a major route to and from the Midwest with connections to I-81 in Pennsylvania, and serves growing residential development just across the border in Pennsylvania.

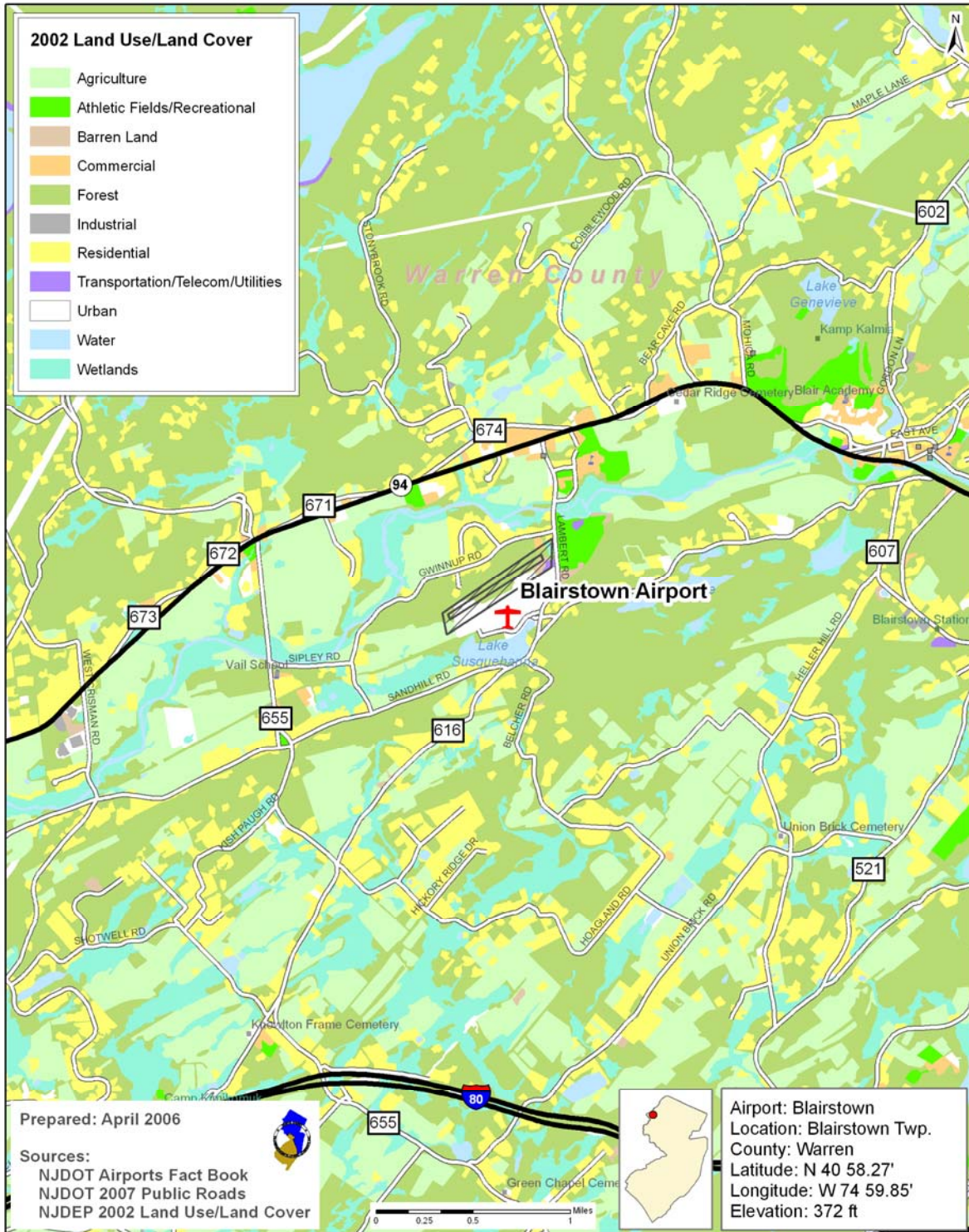
Signage is desired at Exit 4 on I-80 to Route 94, on Route 94 at CR 616 and at Exit 12 on I-80 to CR 521. Closer in, signage is desired on CR 616 and 671; along Route 94; along CR 675 from the west and along CR 521 and CR 607 heading north towards the airport.

The intersection of CR 655 with Lambert Road and Sandhill Road should also be signed.



Blairstown Airport (1N7)
Blairstown, NJ

NJTPA Core Airports



NJTPA Core Airports

Two way - 24 Hour Traffic Volume for Surrounding Roads

