

Hunterdon County

Alexandria Field - Pittstown

William Fritsche and Linda Castner, Owners, Alexandria Airpark LLC.

General:

This airpark, zoned for airport business, occupies 76 acres near the town of Pittstown in Hunterdon County. The vision for an airpark took root in 1975 when the owners built their homes and a hangar on the property adjacent to the family-owned airport. By subdividing three more lots, they effectively began a residential airpark. It has two runways. Runway 8/26 is 2550 feet long by 60 feet wide, with a 25 foot wide taxiway. It is asphalt paved with a grass overrun. The second runway, 13/31, is 1810 feet long by 30 feet wide and asphalt paved. There are approximately 100 based aircraft at the Field and the airport generates an average of 80 operations per day. The airpark provides aviation fuel from 8 a.m. to 8 p.m. and there is an aircraft repair and maintenance facility on the property. As an airpark, there are now ten houses connected by taxiway to the runways. At the airport there is a very active flight school with 5 aircraft and 4 flight instructors.

Future

The owners would like to see more state protection of GA airports. They take a wait and see attitude on VLJ's as they don't believe current runways would allow for their usage. They want to maintain what they have, which is a very well run 24 hour / 7 days a week airport with amenities.

Access and Wayfinding Issues

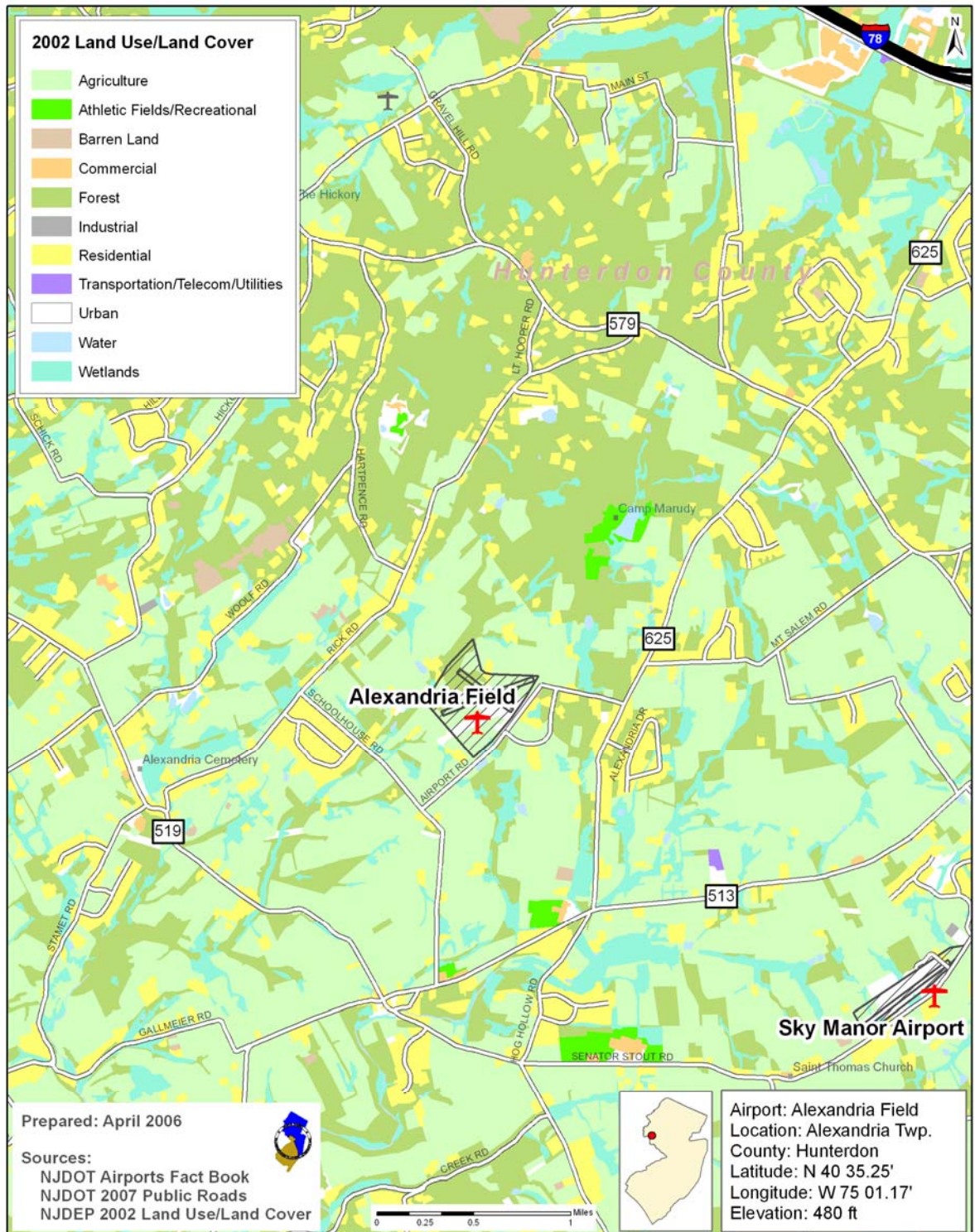
Alexandria Field lies very close to Sky Manor Airpark. The best approach is via I-78 Exit 12 East or West, to CR 625 South to Airport Road. The airport can also be reached via

Rt. 12 W from Flemington. The surrounding roadways are rural in nature. Signage could be placed on I-78 near exit 12, and at locations north and south of the intersection of CR 625 and Airport Road. There is good signage in Pittstown itself displaying the directions to both Sky Manor Airport and Alexandria Field.



Alexandria Field (N85)
Pittstown, NJ

NJTPA Core Airports



NJTPA Core Airports

Two way - 24 Hour Traffic Volume for Surrounding Roads

