

ACCESSING CUBE AND THE NJRTM-E USING NJTPA CITRIX SERVER

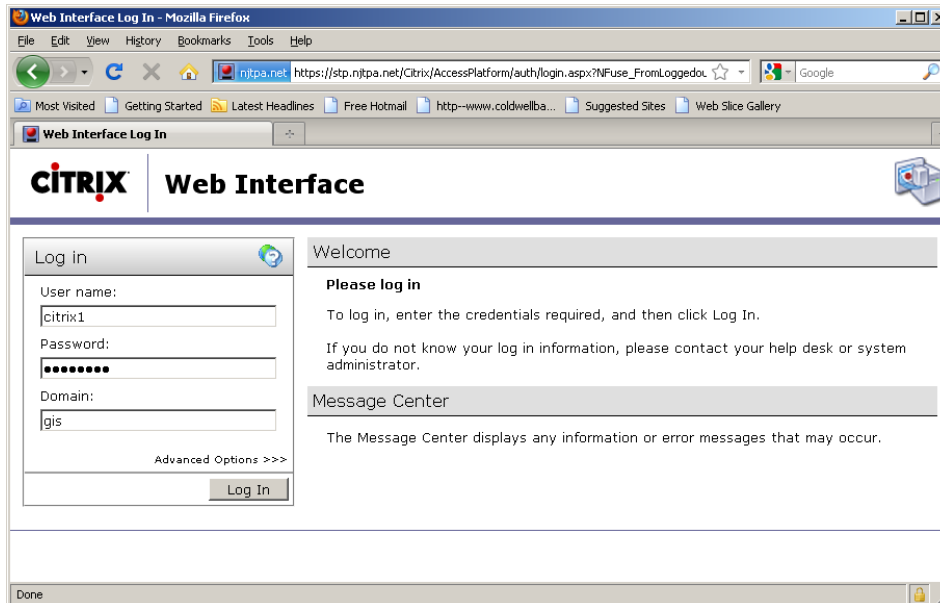
Accessing NJTPA Citrix Server:

To access CUBE using NJTPA's Citrix server, the user must, first, install and log-in to the server.

Go to <https://stp.njtpa.net> (please note the "s" in https://)

Initial Installation:

The following screen will show:

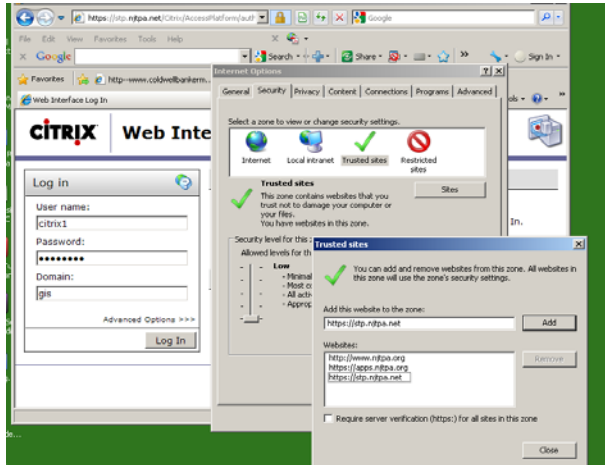


Run the Citrix Web Client Installation:

If this is your first time accessing the Citrix server, after entering your login credentials for the first time (previously provided to you by NJTPA) you will be prompted to install the Citrix web access client. Select "detect clients" then "download" and "run" to install.

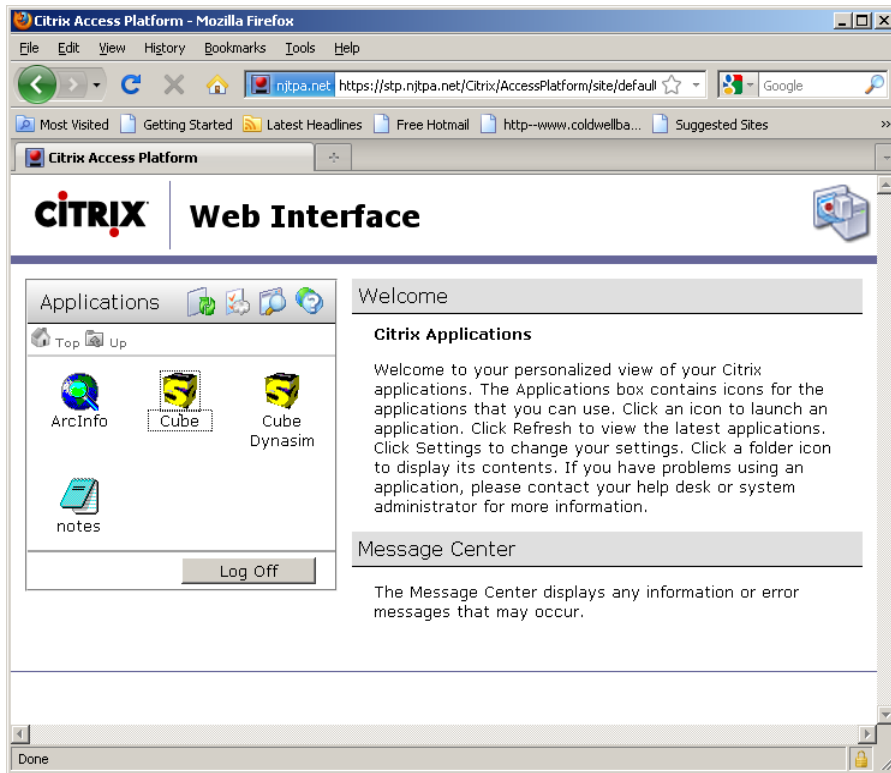
After the successful installation of the Citrix web access client you will be prompted to install a required ActiveX Control.

It is also recommended that you add the <https://stp.nitpa.net> site to your trusted sites list in Internet Explorer. Click on “Tools”, then “Internet Options”, then “Security”, then “Trusted Sites”:



Running Applications:

Once the Citrix web client and ActiveX control have been successfully installed and you log in, you will see your available applications:

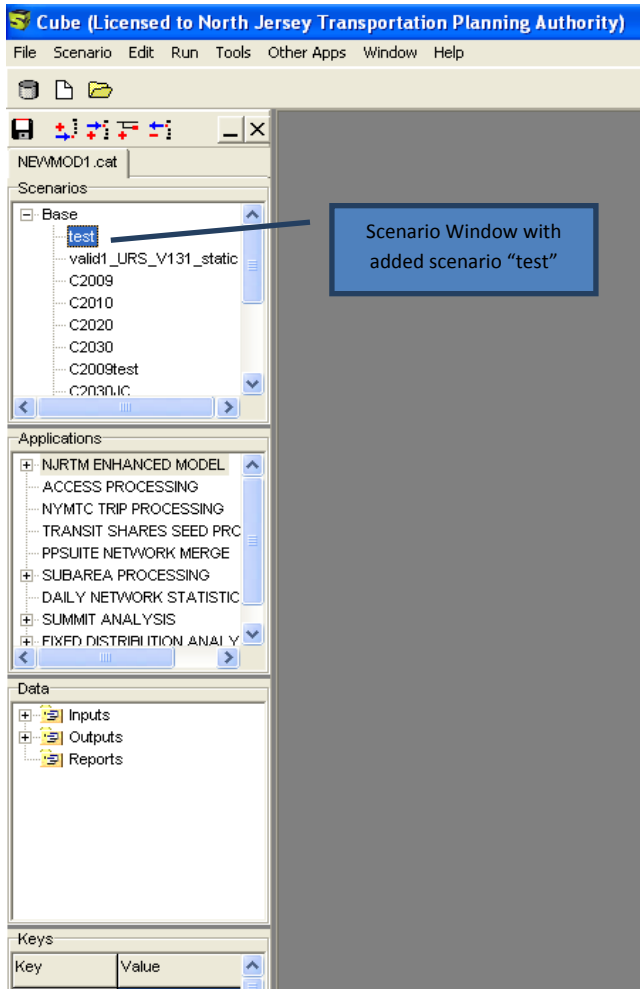


Click on the icon to launch the application.

CUBE ACCESS VIA CITRIX SERVER

Scenario Creation

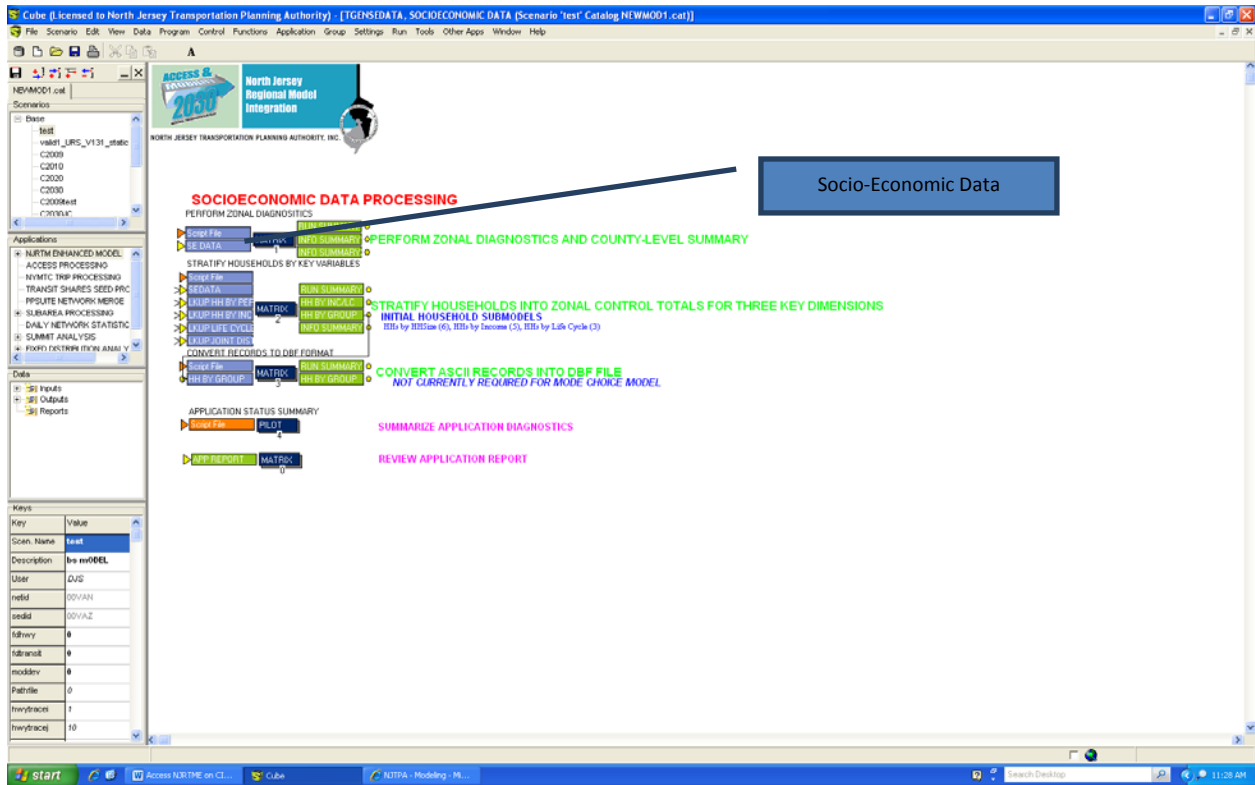
The user must notify the current model contact (Bob Diogo at the time of this writing) at NJTPA; NJTPA will create the scenario. NJTPA will provide a name for the scenario being tested. The created scenario will be shown on the left side of the screen within the scenario window. The user should highlight the scenario to access the files for that scenario:



Once NJTPA creates a scenario, the user can make socio-economic forecasting changes and/or highway and transit network changes as described in the NJRTM-E Users Guide available through NJTPA's website: <http://www.njtpa.org/DataMap/Perf/Model/default.aspx>. The link to the guide is on the right hand side of the page under "Related Documents".

Double-Clicking "NJRTM ENHANCED MODEL" under applications brings up the flowchart starting point for the model (see following picture):

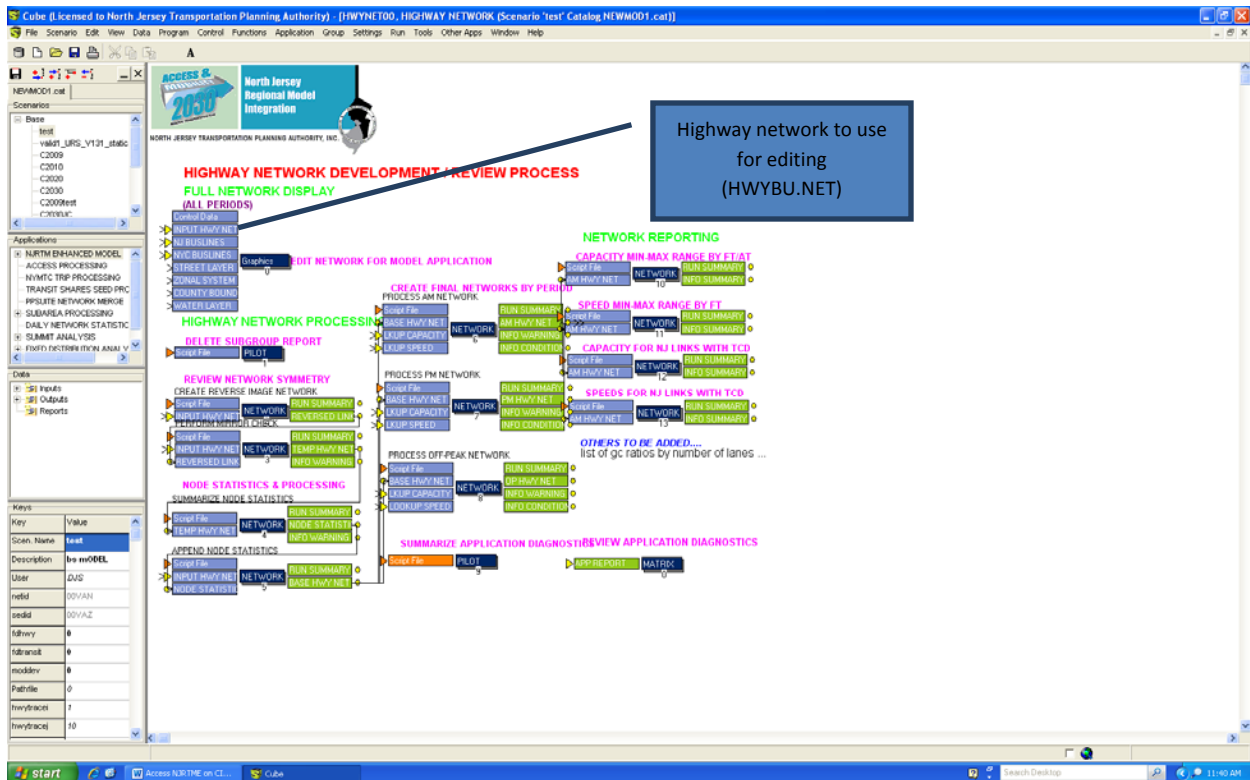
Clicking on the first box (SocioEconomic Data) sends you to a flowchart where the user can access the socio-economic data by clicking on the box labeled “SEDATA”:



Desired changes can then be made to the TAZ demographic data used by the model.

Highway Network

All highway network changes should be made using the initial input highway network (HWYBU.NET). Clicking on the first box labeled “HIGHWAY NETWORK” from the opening flowchart takes you to a flowchart where you can access this network:



After clicking on the file, the model will ask the user if they want to read a XY file now (click “No”). The network will then display along with background boundary files. The network can then be edited as described in the NJRTM-E Model Users Guide.

Users with any additional questions on using CUBE and the NJRTM-E model can contact NJTPA’s modeler.